



RELIABLE
STORAGE SYSTEMS

ELECTRIC SIT-ON REACH TRUCKS

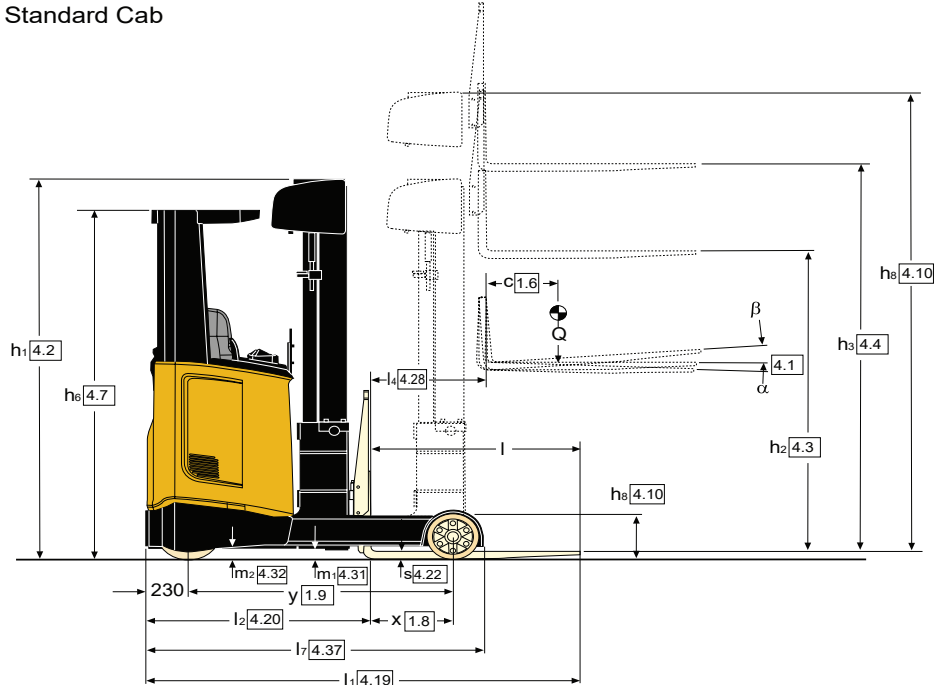
RMR 14 - 25



*One Stop Storage Solution
In Material Handling Equipments*

TRUCK DIMENSIONS – RMR SERIES

Standard Cab

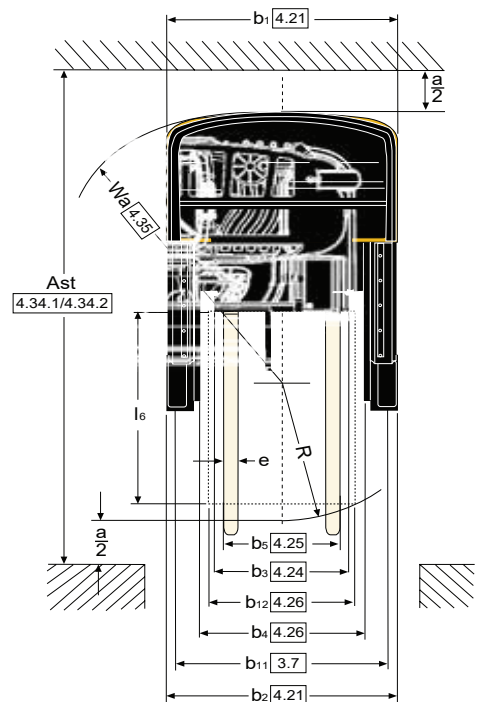
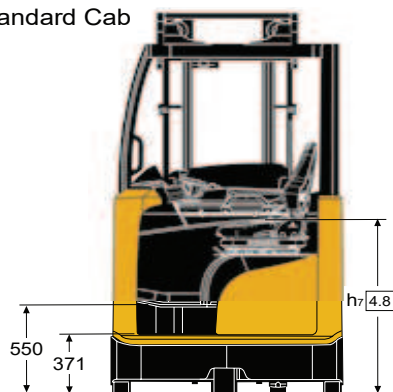


$A_{st} = Wa + R + a$
 (See rows 4.34.1 and 4.34.2)

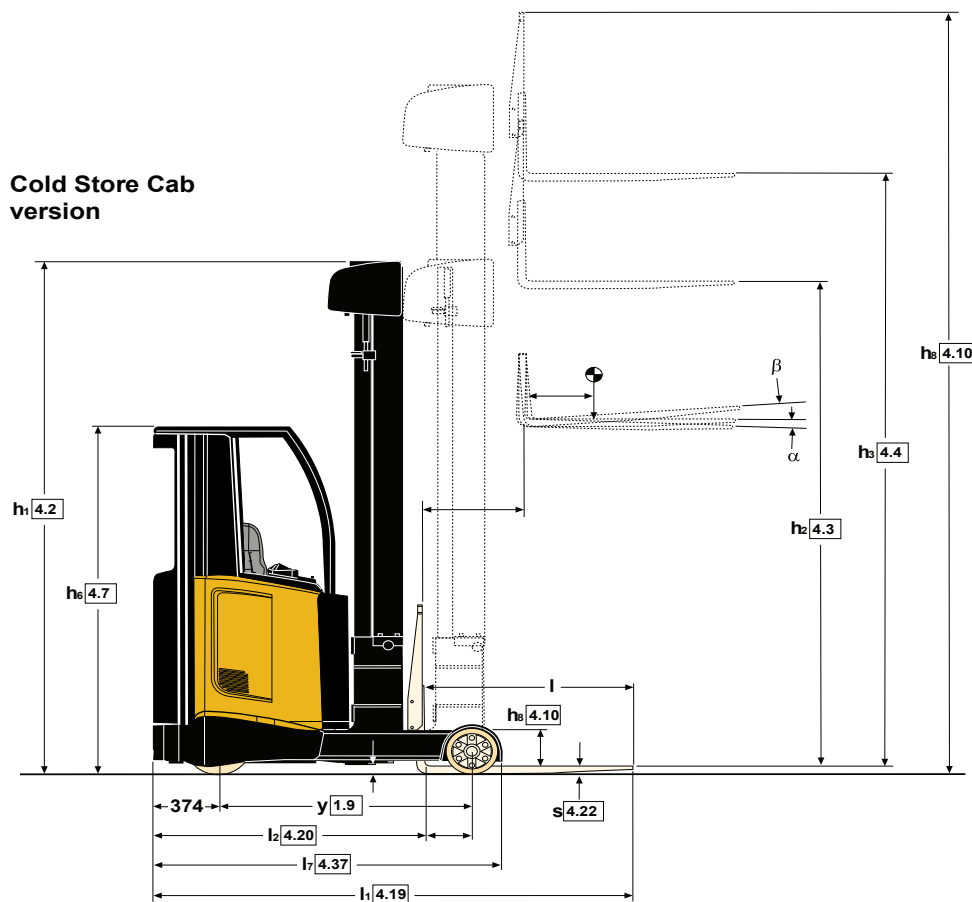
$$R = \sqrt{(l - x)^2 + \left(\frac{b_{12}}{2}\right)^2}$$

$a = 200\text{mm}$

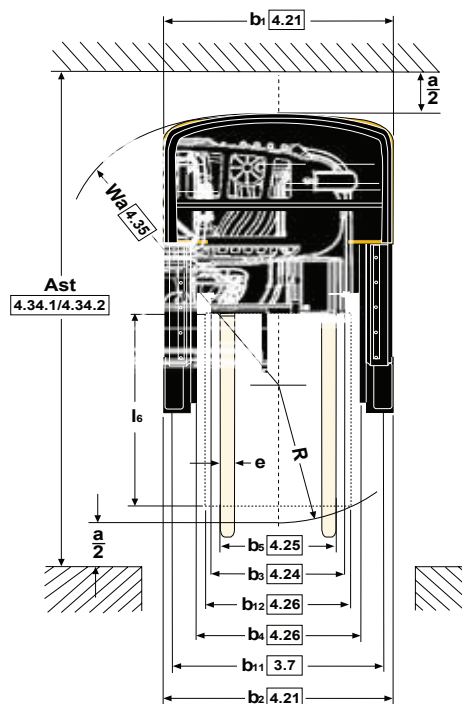
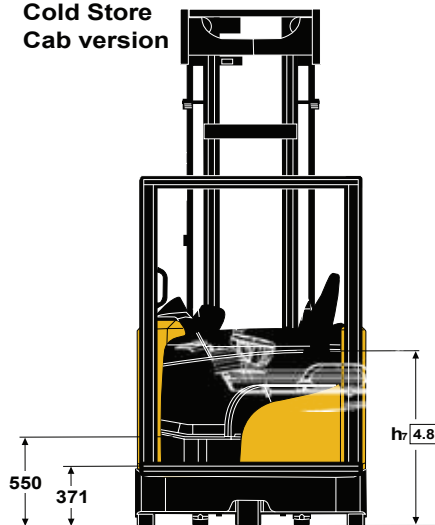
Standard Cab



TRUCK DIMENSIONS – RMR SERIES



Cold Store Cab version





VDI 2198 – GENERAL SPECIFICATIONS – RMR SERIES

		RMR14	RMR16	RMR16N	RMR20	
GENERAL	1.2 Model designation					
	1.3 Drive		Electric (battery)			
	1.4 Operator type		Seated			
	1.5 Rated capacity/Rated load	Q (kg)	1.4	1.6	2.0	
	1.6 Load centre distance	c (mm)		600		
	1.8 Load distance, centre of drive axle to fork ⁽⁹⁾⁽¹⁰⁾⁽¹⁶⁾⁽¹⁷⁾	x (mm)	258	308	202	343
1.9 Wheelbase	y (mm)	1400	1450		1500	
WEIGHT	2.1 Service weight	kg	3495	3546	3498	3801
	2.3 Axle loading, unladen front/rear ⁵⁾	kg	2055/1440	2103/1443	1955/1543	2296/1504
	2.4 Axle loading fork advanced, laden front/rear	kg	885/4010	810/4336	757/4341	770/5030
	2.5 Axle loading fork retracted, laden front/rear	kg	1711/3184	1779/3367	1514/3584	1971/3829
TYRES	3.1 Tyres front/rear		NDIIThane			
	3.2 Tyre size, front	ø mm x mm	343 x 140			
	3.3 Tyre size, rear	ø mm x mm	285 x 100			
	3.5 Wheels, number front/rear (x = driven wheels)		1x/2			
	3.7 Tread, rear	b ₁₁ (mm)	1155		1025	1155
DIMENSIONS	4.1 Tilt of mast/fork carriage forward/backward	α / β (°)	2 / 4			
	4.2 Height of mast, lowered	h ₁ (mm)	2195			
	4.3 Free lift	h ₂ (mm)		1648		1582
	4.4 Lift	h ₃ (mm)		5000		4650
	4.5 Height, mast extended ⁽¹⁾	h ₄ (mm)	5563			
	4.7 Height of overhead guard (cabin) ⁽²⁾⁽¹²⁾⁽¹⁵⁾	h ₆ (mm)	2175			
	4.8 Seat height relating to SIP	h ₇ (mm)	1082			
	4.10 Height of wheel arms	h ₈ (mm)	308			
	4.19 Overall length	l ₁ (mm)	2523		2629	2538
	4.20 Length to face of forks ⁽¹⁶⁾⁽¹⁷⁾	l ₂ (mm)	1373		1479	1388
	4.21 Overall width ⁽³⁾⁽¹³⁾⁽¹⁴⁾	b ₁ /b ₂ (mm)	1265		1125	1265
	4.22 Fork dimensions DIN ISO 2331	s/e/l (mm)	40/80/1150		40/120/1150	
	4.23 Fork carriage ISO 2328, class/type A, B			2A		
	4.24 Fork-carriage width	b ₃ (mm)		700		
	4.25 Distance between fork-arms min/max ⁶⁾	b ₅ (mm)	220/640		260/680	
	4.26 Distance between wheel arms/loading surfaces	b ₆ (mm)	900		795	900
	4.28 Reach distance	l ₄ (mm)	441	491	385	541
	4.31 Ground clearance, laden, below mast	m ₁ (mm)	75			
	4.32 Ground clearance, centre of wheelbase	m ₂ (mm)	85			
	4.34.1 Aisle width for pallets 1000mm x 1200mm crossways ⁽¹⁾⁽¹⁶⁾⁽¹⁷⁾	A _{st} (mm)	2826	2834	2899	2857
4.34.2 Aisle width for pallets 800mm x 1200mm lengthwise ⁽¹⁾⁽¹⁶⁾⁽¹⁷⁾	A _{st} (mm)	2895	2896	2976	2913	
4.35 Turning radius	Wa (mm)	1671	1718	1700	1767	
4.37 Length across wheel arms	l ₇ (mm)	1795		1845	1895	
4.42 Step height (from ground to running board)	mm	550				
4.43 Step height (between intermediate steps between running board and floor)	mm	371				
PERFORMANCE	5.1 Travel speed, laden/unladen ⁽⁷⁾	km/h	11/11 (14/14) ⁽²⁰⁾		11/11 (14/14)	
	5.1.1 Travel speed, laden/unladen, backwards ⁽⁷⁾	km/h	11/11 (14/14) ⁽²⁰⁾		11/11 (14/14)	
	5.2 Lift speed, laden/unladen ⁽⁷⁾	m/s	0.37/0.63 (0.47/0.73)	0.32/0.63 (0.42/0.73)		0.37/0.64
	5.3 Lowering speed, laden/unladen	m/s	0.55		0.55/0.50	
	5.4 Reaching speed, laden/unladen	m/s	0.17/0.17			
	5.7 Gradeability, laden/unladen ⁽⁷⁾⁽¹⁶⁾	%	7/10 (15/20)	7/10 (14/20)		12/20
	5.8 Max. gradeability laden/unladen ⁽⁷⁾⁽¹⁸⁾	%	15/20 (15/20)	14/20 (14/20)		12/20
	5.9 Acceleration time laden/unladen ⁽⁷⁾	s	3.3/3.3 (2.6/2.6)	3.4/3.4 (2.7/2.7)		2.6/2.5
	5.10 Service brake		Electric			
	ELECTRIC	6.1 Drive motor S2 60 minute rating ⁽⁷⁾	kW	5.4 (9.6) ⁽¹⁹⁾		9.6
6.2 Lift motor, S3 15% rating ⁽⁷⁾		kW	9.9 (14)		14	
6.3 Battery according to DIN 43531 / 35 / 36 A,B,C, no			C		B	C
6.4 Battery voltage/nominal capacity K5		(V) / (Ah)	48/700 ⁽⁶⁾			
6.5 Battery weight ⁽⁴⁾		kg	1119			
6.6 Energy consumption according to VDI cycle		kWh/h @ no. of cycles	2.72 (2.68)	3.01 (2.96)		3.90 (4.23)
6.7 Turnover output according to VDI 2198 ⁽⁷⁾		t/h	56 (60)	65 (68)		79 (79)
6.8 Turnover efficiency according to VDI 2198 ⁽⁷⁾		t/kWh	20 (18)	20 (20)		19 (18)
OTHER	8.1 Type of drive unit		AC-Controller			
	10.1 Operating pressure for attachments	bar	180			
	10.2 Oil volume for attachment	l/min	20			
	10.7 Sound pressure level at the driver's seat	dB (A)	<69.7			



VDI 2198 – GENERAL SPECIFICATIONS – RMR SERIES

			RMR25	RMR16HD	RMR20HD	
GENERAL	1.2	Model designation				
	1.3	Drive		Electric (battery)		
	1.4	Operator type		Seated		
	1.5	Rated capacity/Rated load	Q (kg)	2.5	1.6	2.0
	1.6	Load centre distance	c (mm)		600	
	1.8	Load distance, centre of drive axle to fork ^{(9) (10) (16) (17)}	x (mm)	436	293	315
1.9	Wheelbase	y (mm)	1670	1450	1550	
WEIGHT	2.1	Service weight	kg	4230	4224	4617
	2.3	Axle loading, unladen front/rear ⁽⁵⁾	kg	2565/1665	2428/1796	2577/2040
	2.4	Axle loading fork advanced, laden front/rear	kg	876/5855	979/4845	985/5632
	2.5	Axle loading fork retracted, laden front/rear	kg	2306/4424	2104/3720	2149/4468
	3.1	Tyres front/rear			NDIIThane	
TYRES	3.2	Tyre size, front	ø mm x mm	343 x 140		
	3.3	Tyre size, rear	ø mm x mm	350 x 140	285 x 100	350 x 110
	3.5	Wheels, number front/rear (x = driven wheels)			1x/2	
	3.7	Tread, rear	b ₁₁ (mm)	1183	1155	1153
	4.1	Tilt of mast/fork carriage forward/backward	α / β (°)	2 / 4		
	4.2	Height of mast, lowered	h ₁ (mm)	2195	3227	
	4.3	Free lift	h ₂ (mm)	1582	2680	2614
DIMENSIONS	4.4	Lift	h ₃ (mm)	4650	7900	7750
	4.5	Height, mast extended ⁽¹⁾	h ₄ (mm)	5263	8463	8363
	4.7	Height of overhead guard (cabin) ^{(2) (12) (15)}	h ₅ (mm)		2175	
	4.8	Seat height relating to SIP	h ₇ (mm)		1082	
	4.10	Height of wheel arms	h ₈ (mm)	373	308	373
	4.19	Overall length	l ₁ (mm)	2615	2538	2615
	4.20	Length to face of forks ^{(16) (17)}	l ₂ (mm)	1465	1388	1465
	4.21	Overall width ^{(3) (13) (14)}	b ₁ /b ₂ (mm)	1345	1265	1273
	4.22	Fork dimensions DIN ISO 2331	s/e/l (mm)		40/120/1150	
	4.23	Fork carriage ISO 2328, class/type A, B			2A	
	4.24	Fork-carriage width	b ₃ (mm)		700	
	4.25	Distance between fork-arms min/max ⁽⁶⁾	b ₅ (mm)		260/680	
	4.26	Distance between wheel arms/loading surfaces	b ₆ (mm)		900	
	4.28	Reach distance	l ₄ (mm)	666	491	496
	4.31	Ground clearance, laden, below mast	m ₁ (mm)		75	
	4.32	Ground clearance, centre of wheelbase	m ₂ (mm)		85	65
	4.34.1	Aisle width for pallets 1000mm x 1200mm crossways ^{(11) (16) (17)}	Ast (mm)	2953	2845	2926
	4.34.2	Aisle width for pallets 800mm x 1200mm lengthwise ^{(11) (16) (17)}	Ast (mm)	2992	2909	2986
	4.35	Turning radius	Wa (mm)	1930	1718	1815
	4.37	Length across wheel arms	l ₇ (mm)	2098	1845	1978
4.42	Step height (from ground to running board)	mm		550		
4.43	Step height (between intermediate steps between running board and floor)	mm		371		
PERFORMANCE	5.1	Travel speed, laden/unladen ⁽⁷⁾	km/h	11/11 (14/14)		
	5.1.1	Travel speed, laden/unladen, backwards ⁽⁷⁾	km/h	11/11 (14/14)		
	5.2	Lift speed, laden/unladen ⁽⁷⁾	m/s	0.30/0.64	0.42/0.73	0.37/0.68
	5.3	Lowering speed, laden/unladen	m/s	0.55/0.50	0.55	
	5.4	Reaching speed, laden/unladen	m/s		0.17 / 0.17	
	5.7	Gradeability, laden/unladen ^{(7) (18)}	%	10/18	12/18	11/16
	5.8	Max. gradeability laden/unladen ^{(7) (18)}	%	10/18	12/18	11/16
	5.9	Acceleration time laden/unladen ⁽⁷⁾	s	2.7/2.6	2.6/2.5	2.7/2.6
	5.10	Service brake			Electric	
	ELECTRIC	6.1	Drive motor S2 60 minute rating ⁽⁷⁾	kW	9.6	
6.2		Lift motor, S3 15% rating ⁽⁷⁾	kW	14		
6.3		Battery according to DIN 43531 / 35 / 36 A,B,C, no		C		
6.4		Battery voltage/nominal capacity K5	(V) / (Ah)	48/840 ⁽⁶⁾	48/700 ⁽⁶⁾	48/840 ⁽⁶⁾
6.5		Battery weight ⁽⁴⁾	kg	1306	1119	1306
6.6		Energy consumption according to VDI cycle	kWh/h @ no. of cycles	4,08 (4,27)	-	
6.7		Turnover output according to VDI 2198 ⁽⁷⁾	t/h	97 (97)	-	
6.8		Turnover efficiency according to VDI 2198 ⁽⁷⁾	t/kWh	23 (22)	-	
OTHER	8.1	Type of drive unit		AC-Controller		
	10.1	Operating pressure for attachments	bar	180		
	10.2	Oil volume for attachment	l/min	20		
	10.7	Sound pressure level at the driver's seat	dB (A)	<69.7		

Think outside the box



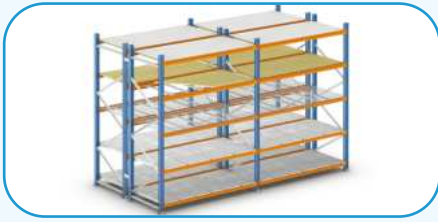
Drive-in Drive Thru Pallet Racking



Modular Mezzanine Floor



Narrow Aisle Pallet Racking



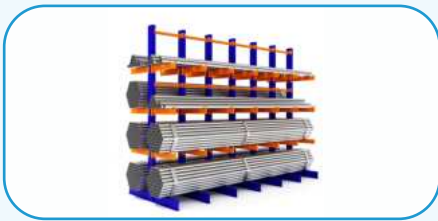
LONG SPAN SHELVING RACK



Boltless Long Span Shelving Rack



Multi Tier Long Span Shelving Rack



Cantilever Racking



M.S Powder Coated Cupboard



Rivet Shelving Rack



Mobile Shelving Rack, Compactor



M.S Powder Coated Lockers



Electric Forklift

www.reliablestorage.co.in



RELIABLE
STORAGE SYSTEMS

ADDRESS :- 103, Lake View Residency, Bhabola - Bangli Road,
Near Husaini Colony, Sandor , Vasai(W),
Dist. Palghar Pin.401 207 Maharashtra, India.

FACTORY :- Unit no. 15, 16, 17, 18 Mamta Compound,
Near Neel Kant Industrial Estate, Vilage
Devdal, Kaman, Vasai(E) - 401208 Maharashtra, India.

PHONE :- 98236 35153 | 98672 89052 | 9320011052

EMAIL :- sales@reliablestorage.co.in | inquiry@reliablestorage.co.in