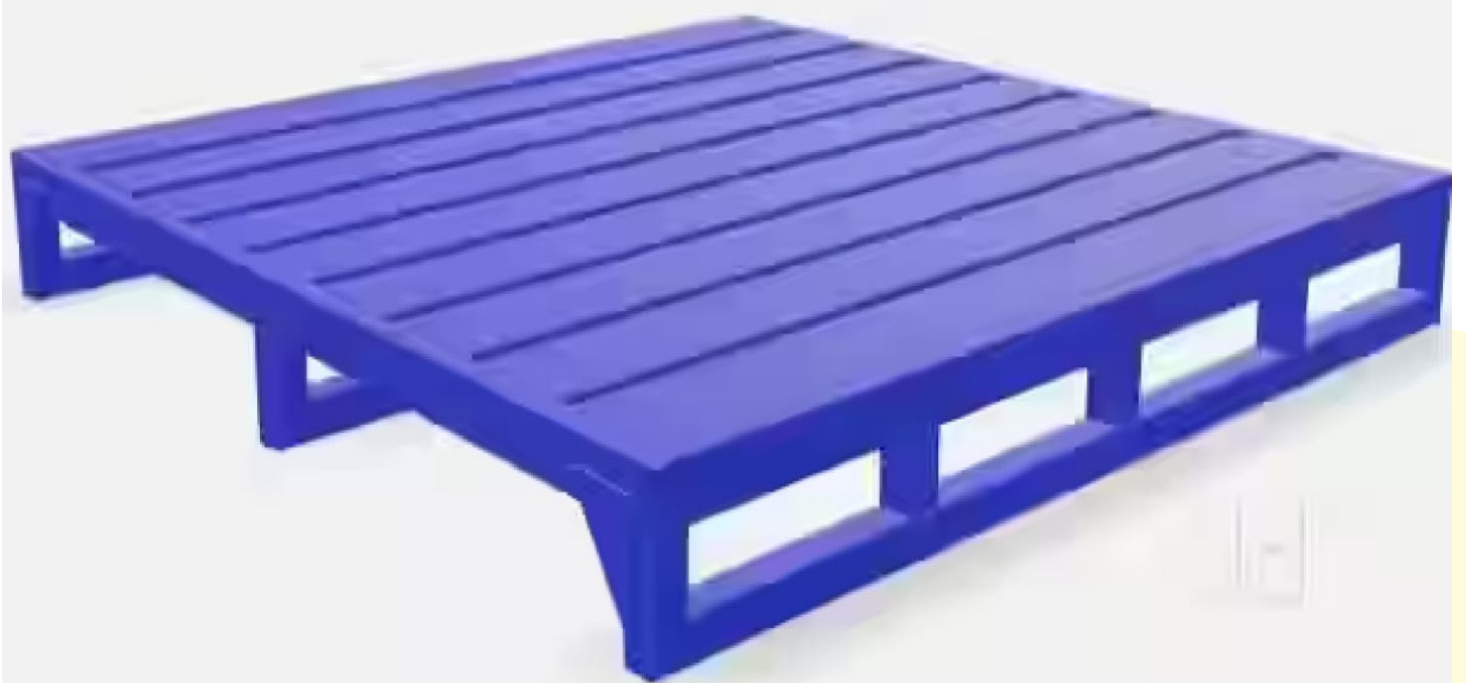




RELIABLE
STORAGE SYSTEMS

METAL PALLET



*One Stop Storage Solution
In Industrial Racking System*

“Metal Tough Warehouse Strong”

A metal pallet is a flat platform used for transporting and storing goods. Unlike traditional wooden pallets, metal pallets are constructed from robust metals like Stainless steel or M.S Steel (CRC), making them ideal for heavy-duty applications.



FEATURES

1. Design Variations

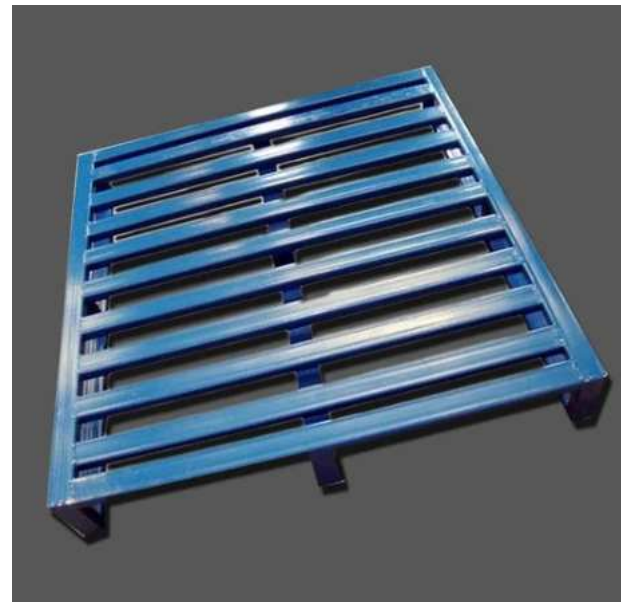
Metal pallets come in various designs to suit specific needs. Options include mesh decks, solid decks, and post pallets with stacking legs.

2. Customization

Metal pallets can be customized with features like lips, overhangs, and integrated containers for specific applications.

3. Load Capacity

Depending on the design, metal pallets can handle loads ranging from a few hundred kilograms to several thousand kilograms.



Benefits and Advantages

1. Strength and Durability

Metal pallets can withstand significantly more weight than their wooden counterparts. They are resistant to warping, bending, and breaking, even under heavy loads.

2. Weatherproof

Metal pallets are unaffected by rain, snow, sun, or extreme temperatures, making them suitable for outdoor storage.

3. Long Lifespan

With proper maintenance, metal pallets can last for decades, offering a much higher return on investment compared to wooden pallets.

4. Hygiene

Metal surfaces are easier to clean and sanitize, making them ideal for applications involving food, pharmaceuticals, or other sensitive materials.



Applications

- Warehousing and Distribution
- Manufacturing
- Construction
- Food and Beverage
- Pharmaceuticals
- Chemicals
- Automotive



Think outside the box



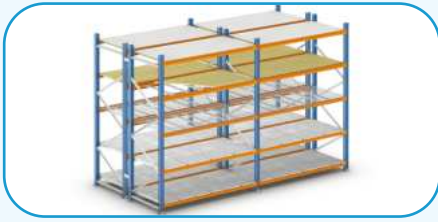
Drive-in Drive Thru Pallet Racking



Modular Mezzanine Floor



Narrow Aisle Pallet Racking



LONG SPAN SHELVING RACK



Boltless Long Span Shelving Rack



Multi Tier Long Span Shelving Rack



Cantilever Racking



M.S Powder Coated Cupboard



Rivet Shelving Rack



Mobile Shelving Rack, Compactor



M.S Powder Coated Lockers



Electric Forklift

www.reliablestorage.co.in



RELIABLE
STORAGE SYSTEMS

ADDRESS :- 103, Lake View Residency, Bhabola - Bangli Road,
Near Husaini Colony, Sandor , Vasai(W),
Dist. Palghar Pin.401 207 Maharashtra, India.

FACTORY :- Unit no. 15, 16, 17, 18 Mamta Compound,
Near Neel Kant Industrial Estate, Vilage
Devdal, Kaman, Vasai(E) - 401208 Maharashtra, India.

PHONE :- 98236 35153 | 98672 89052 | 9320011052

EMAIL :- sales@reliablestorage.co.in | inquiry@reliablestorage.co.in